

**GRAND PALAIS, PARIS**  
**28<sup>TH</sup> BIENNALE DES ANTIQUAIRES**  
**10-18 SEPTEMBER 2016**

**STAND N04**  
**GALERIE MALAQUAIS**



**Jean-Baptiste Carpeaux (1827-1875), *Model for the Four Parts of the World*, 1867,**  
Terra cotta proof, Signed : J. B. Carpeaux, H. 55 cm.

## THE GALERIE MALAQUAIS

Originally situated on the quai Malaquais, the Galerie Malaquais is now on the right bank at 93 rue Faubourg Saint-Honoré. For the past ten years, we have handled figurative sculpture from the 19th and 20th centuries. We choose works by the great masters, including Bourdelle, Maillol, and Rodin and are also committed to discovering excellent work by lesser-known representatives of modern sculpture such as Charles Despiau, Marcel Gimond, Jane Poupelet, Charles Malfray, Marcel Damboise, Jean Carton, and Léon Indenbaum.

The gallery features works that address the eye, the mind, and the heart, and that broaden aesthetic sensibility by presenting a variety of works by the sculptors it handles; these include drawings, paintings, and engravings, as well as the sculptures themselves, thus offering a new perspective on these artists. The gallery organizes both single-artist shows and thematic ones, exploring original themes such as the sculpted portrait, the drawings of sculptors, and others. Each exhibition is accompanied by a thoroughly documented publication designed for both the larger public and specialists.

Jean-Baptiste Auffret, the director of the gallery and the son of the sculptors Charles Auffret and Arlette Ginioux, has known some of the sculptors we show. He dedicates all of his energy to communicating the sensuous and poetic aspects of these works. His staff, composed of art historians, researches each piece thoroughly, making use of the latest materials available in museum libraries and public and private archives. Our combination of informed expertise and scientific application has attracted the attention of collectors and the confidence of museums. Works handled by the Galerie Malaquais are currently in a number of French and American public collections, including the Musée d'Orsay, the Rodin Museum, and the Petit Palais.

The Galerie Malaquais regularly works with public institutions and private partners to bring works beyond the walls of their traditional exhibition spaces. To this end, the gallery has collaborated with the Parisian legal firm Gramond & Associates, the Villa Medici in Rome, and the Despiau-Wlérick Museum in Mont-de-Marsan, and each of these events has given rise to additional publications. The gallery also participates in a number of salons, including the Salon du Collectionneur in Paris, the Foire des Antiquaires de Belgique in Brussels, and, of course, the Biennale des Antiquaires de Paris.

## THE 28<sup>TH</sup> BIENNALE AND THE GALERIE MALAQUAIS

For the 28th Biennale des Antiquaires and our fourth participation in this salon, the Galerie Malaquais has put together an eclectic group of works by sculptors dear to us.

To represent the 19th century, we chose Préault's medallion *Silence* to juxtapose the model of Carpeaux's iconic *Observatory Fountain* and Camille Claudel's *Torso of a Crouching Woman*.

For the 20th century, we're presenting rare works by Rodin and Maillol as well as spotlighting the work of Malfray with a major early work, *Orpheus*, 1914, alongside pieces by Manolo and Laurens, sculptors who were under contract with the influential dealer Daniel-Henri Kahnweiler during the 1920s. In addition, those interested in modern sculpture will no doubt be intrigued by Julio Gonzalez's *Mask of an Adolescent*, c. 1930.

And finally, in honor of the international reputation of the Biennale, the gallery has chosen to unveil a major new step in our development. Known for our works from the 19th and 20th centuries, we're opening the gallery up to preceding centuries, specifically the 17th and 18th. In order to spread the word, we'll have a special surprise for Biennale visitors who pass by to visit us.



**Julio Gonzalez (1876-1942), *Mask of an Adolescent*, c. 1930. Bronze proof, #1/8, Lost wax cast by Claude Valsuani, 1970. Signed: GONZALEZ; H. 32 cm.**

## IMAGES AVAILABLE TO THE PRESS

— Jean-Baptiste Carpeaux (1827-1875), *Model for the Four Parts of the World*, 1867, terra cotta proof, signed: J. B. Carpeaux; H. 55 cm.

— Jean-Baptiste Carpeaux (1827-1875), *Palombella with a Necklace*, bronze proof, signed and dated: J. B. Carpeaux 1873; H. 40 cm.

— Camille Claudel (1864-1943), *Torso of a Crouching Woman*, 1887, bronze proof, lost wax cast; H. 35, W. 21, D. 19 cm.

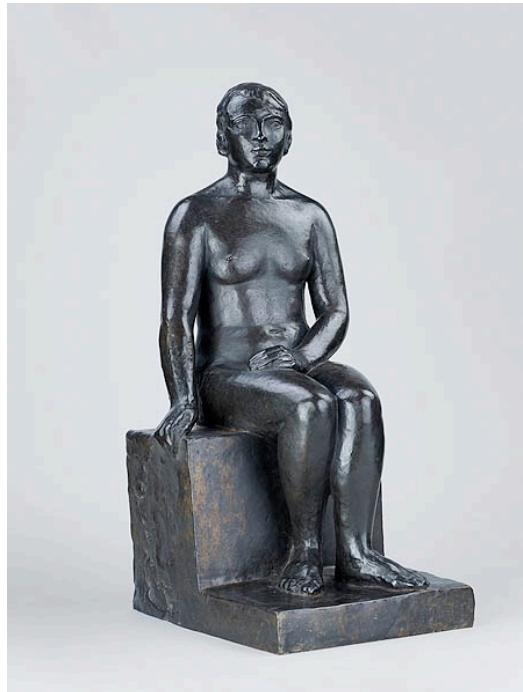
— Charles Despiau (1874-1946), *Spring or Seated Nude*, 1923-1925, bronze proof, # 2/3, lost wax cast by Claude Valsuani, signed: C. Despiau; H. 71, W. 30, D. 37 cm.

— Julio Gonzalez (1876-1942), *Mask of an Adolescent*, c. 1930, bronze proof, # 1/8, lost wax cast by Claude Valsuani, 1970, signed: GONZALEZ; H. 32 cm.

— Charles Malfray (1887-1940), *Orpheus' Grief*, known as *The Song of the Poet*, 1914, bronze proof, # 1/8, sand cast by Alexis Rudier, signed: CH. MALFRAY 1914; H. 117, W. 40, D. 40 cm

— Auguste Préault (1809-1879), *Silence, Medallion for the Tomb of Jacob Roblès (Père-Lachaise)*, 1843) bronze proof, signed: A. Préault et S F Baquié, Diameter: 19 cm.

FOR ALL THE IMAGES: © Galerie Malaquais / Photos Laurent Lecat



**Charles Despiau (1874-1946)**, *Spring or Seated Nude*, 1923-1925, Bronze proof, # 2/3, Lost wax cast by Claude Valsuani, signed: C. Despiau; H. 71, W. 30, D. 37 cm.

## PRACTICAL INFORMATION

Hours of the Biennale:

From Saturday, September 10 to Sunday, September 18, 2016

From 11 AM to 8 PM

Open until 11 PM on Thursday, September 15

Hours for the Galerie Malaquais during the Biennale:

From Tuesday to Friday from 2 PM to 6 PM

Galerie Malaquais

93 rue du Faubourg Saint-Honoré

75008 Paris

Telephone: +33 (0)1 42 86 04 75

Internet: [www.galerie-malaquais.com](http://www.galerie-malaquais.com)



**Auguste Préault (1809-1879), *Silence*, Medallion for the Tomb of Jacob Roblès (Père-Lachaise), 1843, Bronze proof, Signed: A. Préault et S F Baquié, Diameter: 19 cm.**



## CONTACTS

- Jean-Baptiste Auffret

Mobile phone: 06 08 58 48 38

Email: [jb.auffret@galerie-malaquais.com](mailto:jb.auffret@galerie-malaquais.com)

- Eve Turbat

Mobile phone: 06 74 41 56 37

Email: [eve.turbat@galerie-malaquais.com](mailto:eve.turbat@galerie-malaquais.com)

- Marie Flambard

Email: [m.flambard@galerie-malaquais.com](mailto:m.flambard@galerie-malaquais.com)



Charles Malfray (1887-1940), *The Song of the Poet or Orpheus' Grief*, 1914, bronze proof, # 1/8, Sand cast by Alexis Rudier, Signed: CH. MALFRAY 1914; H. 117, W. 40, D. 40 cm.